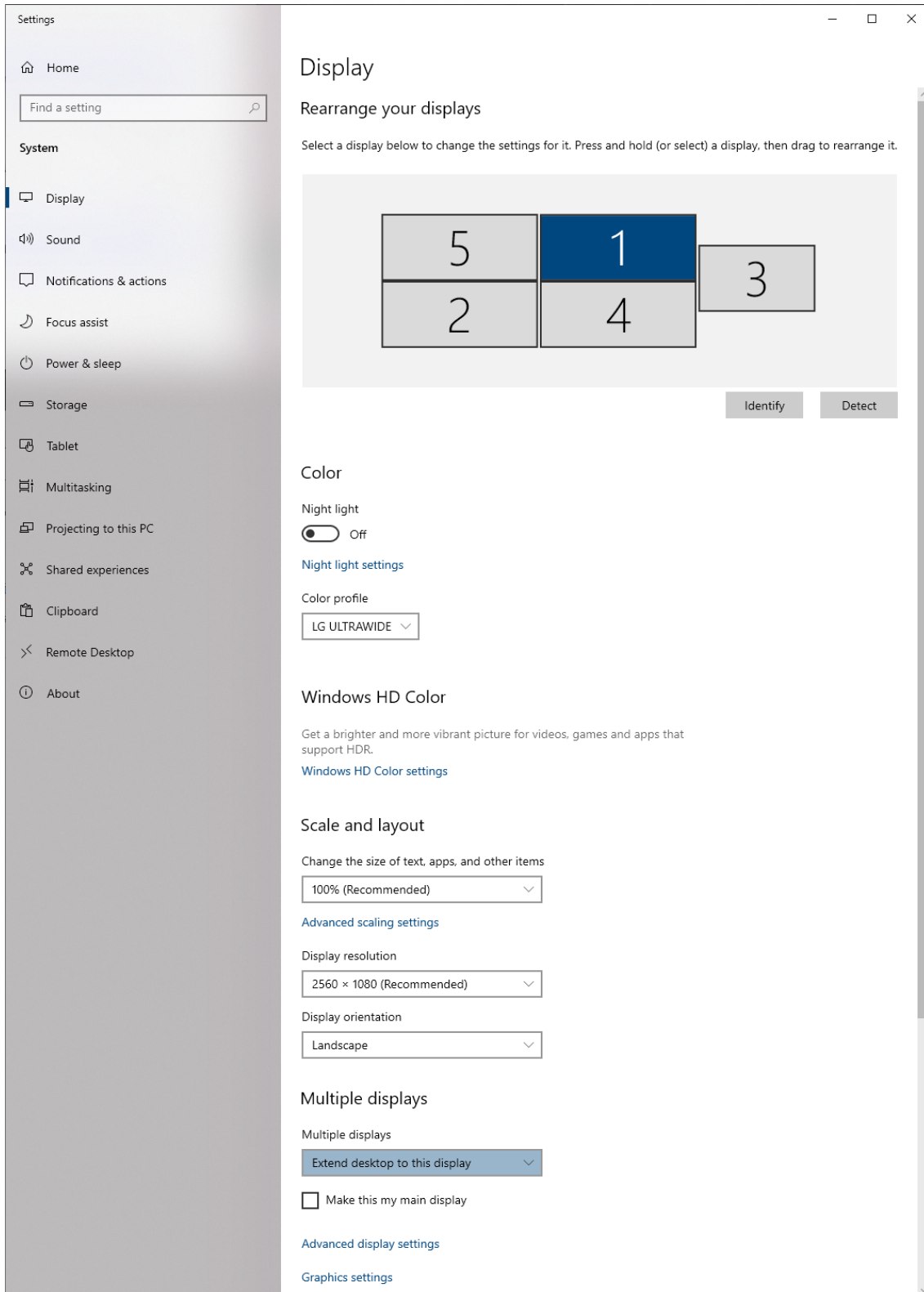


Windows 10 Display Settings.

Open Settings and type “display” in the search box. Duplicate or extend should appear. Click on it. This will take you to the display window where you can select "extend" for the secondary monitor.

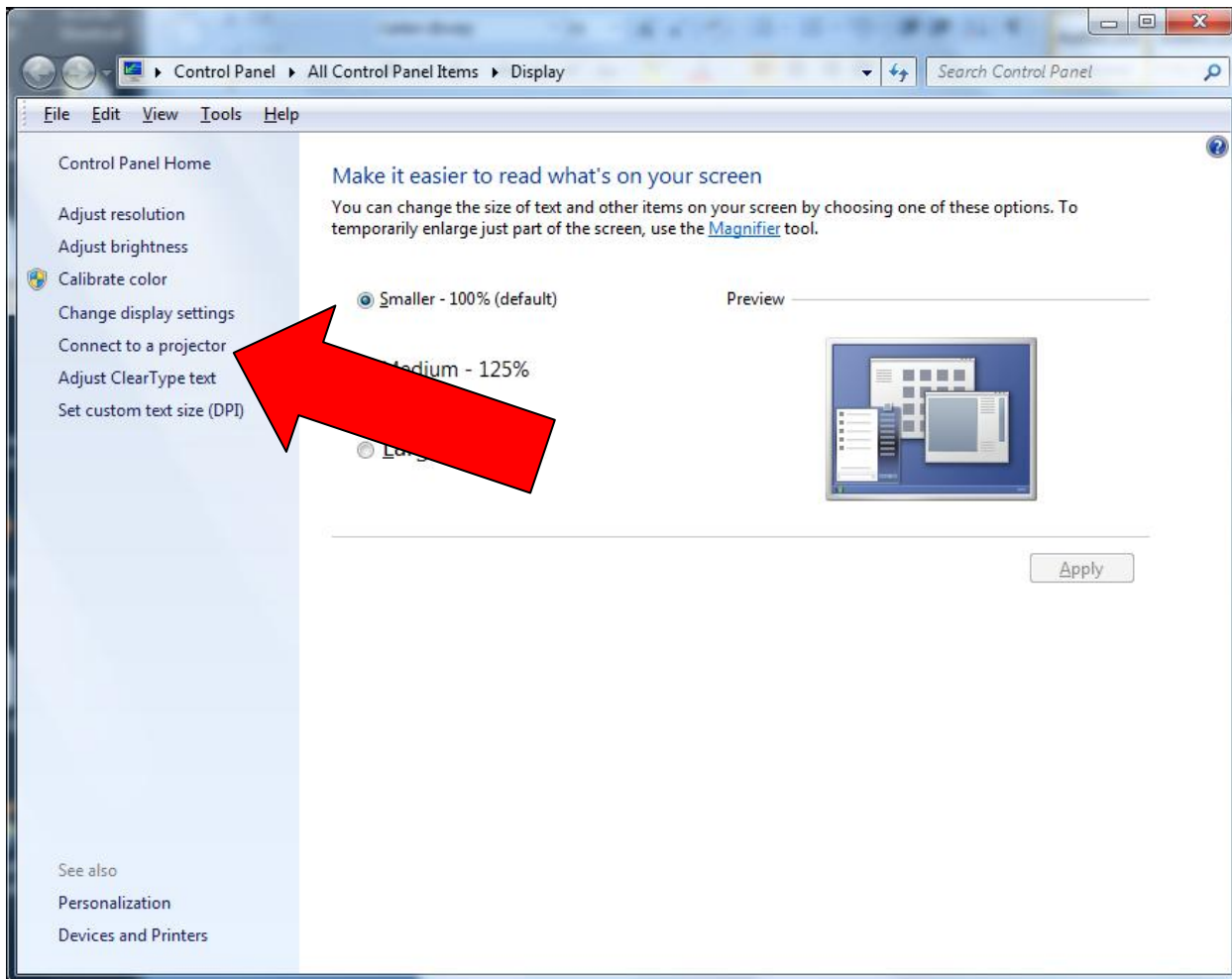
*You will need to scroll down to see the option.



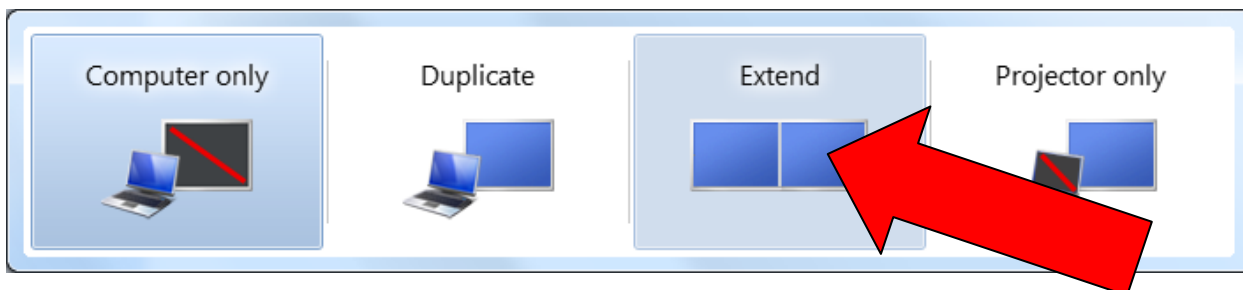
Secondary display setup and image reversal for Power Prompter. Windows 7 Instructions.

Plug in the Prompter monitor and turn it on. Boot up your laptop.

From the desktop, select the Windows button, select Control Panel, select Display.



On the left side of the display window, select “Connect to a projector”

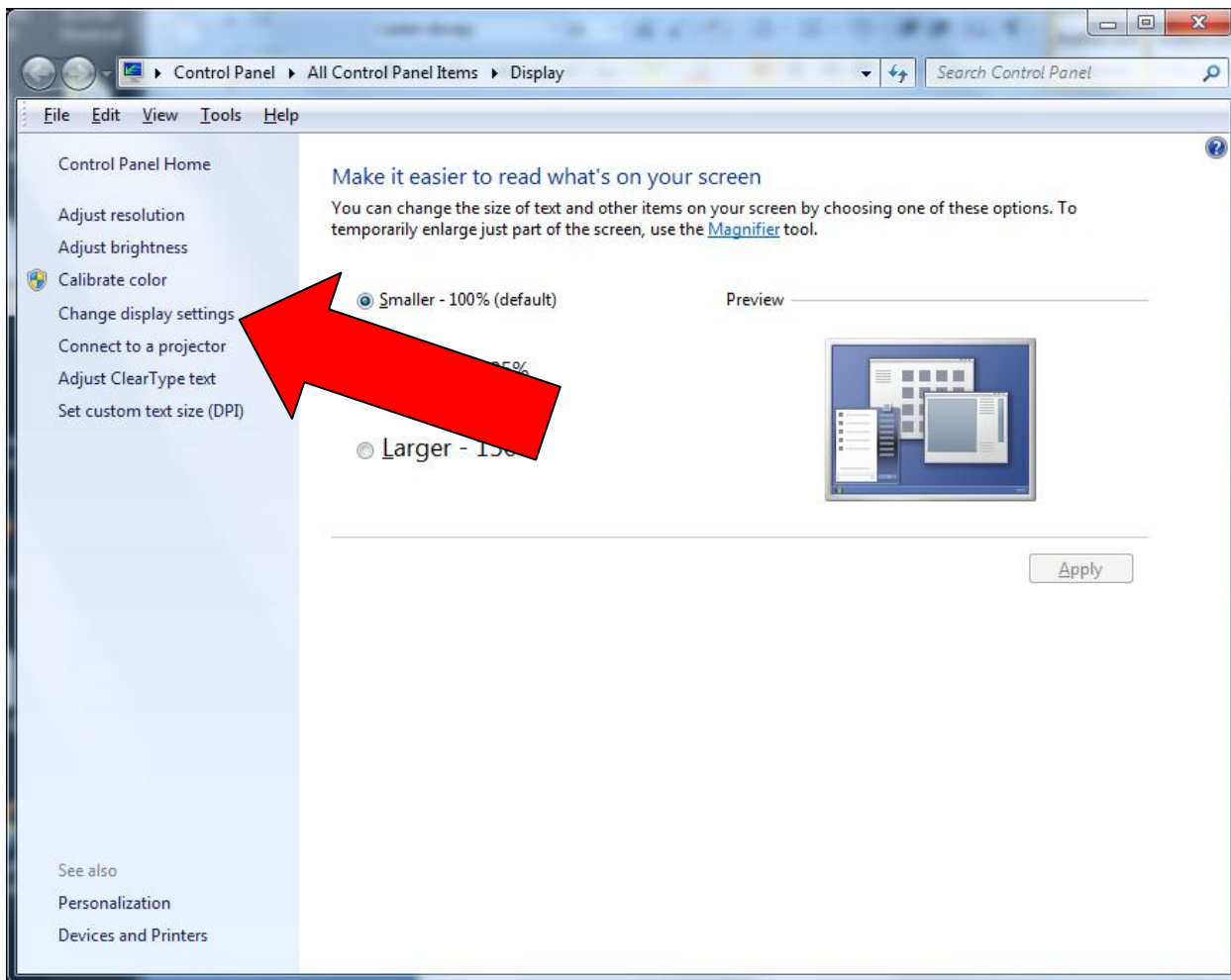


Then select “Extend”

Your screen will go black momentarily while Windows changes the display output.

You will then be brought back to the “Display” window.

Select "Change Display Settings"



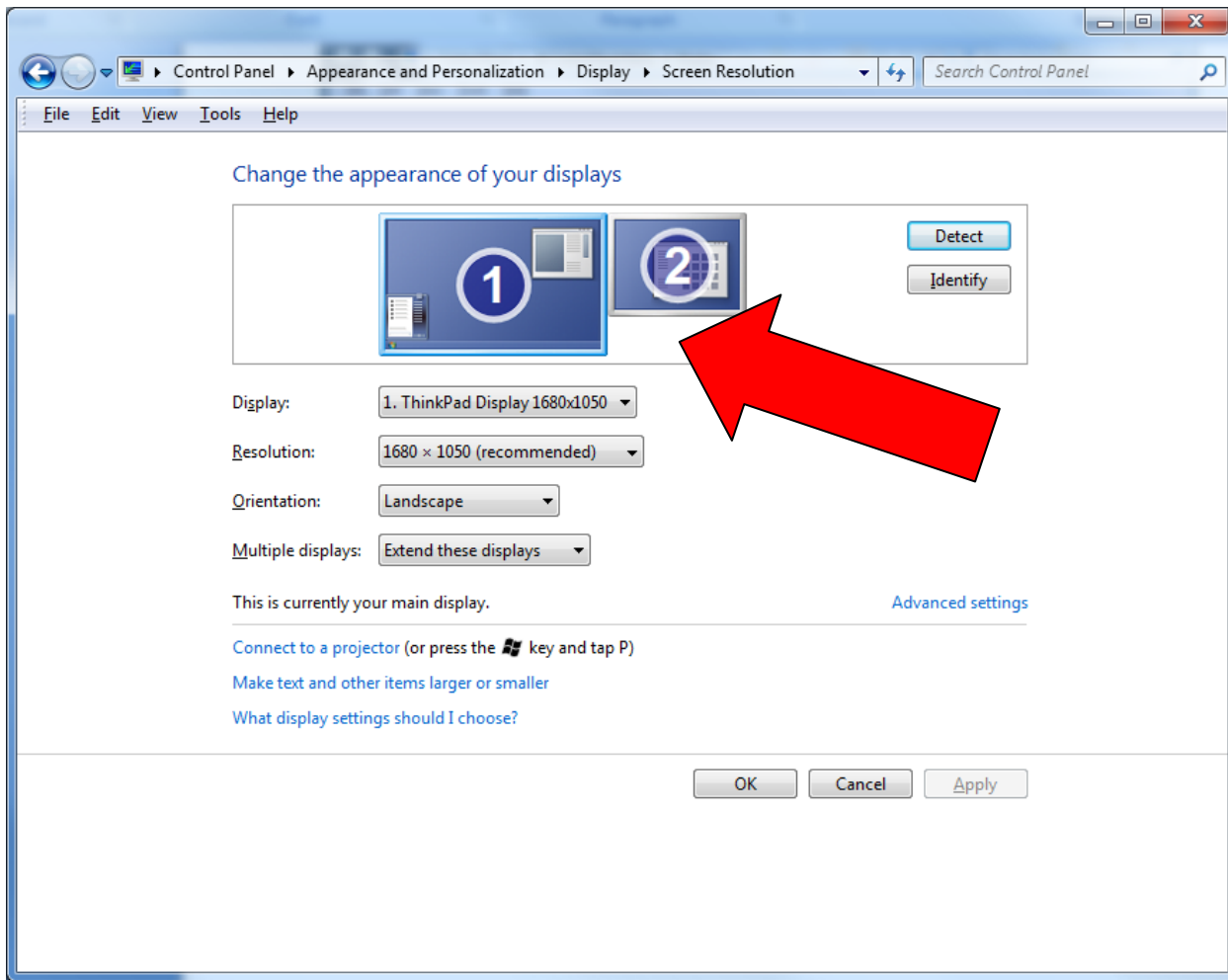
The screen below should appear and show monitor 1 and monitor 2 detected on your system

The resolution settings will likely be set to the maximum supported resolution recommended by Windows.

You will need to alter these setting to find the optimal setting for your computer and the Power Prompter software.

For optimal performance, it is recommended that you operate monitor 2 (the prompter monitor) in a lower resolution than monitor 1 (the laptop monitor).

For example, on a faster laptop with an Nvidia graphics card you might run monitor 1 at 1440x900 and monitor 2 at 1024x768. On a more budget conscious computer, you might run monitor 1 at 1280x720 and monitor 2 at 800x600.



Because every computer is different and operates at a different speed, you may need to try multiple settings before finding the best results for your computer.

Scroll speed can also be adjusted from within the program.

